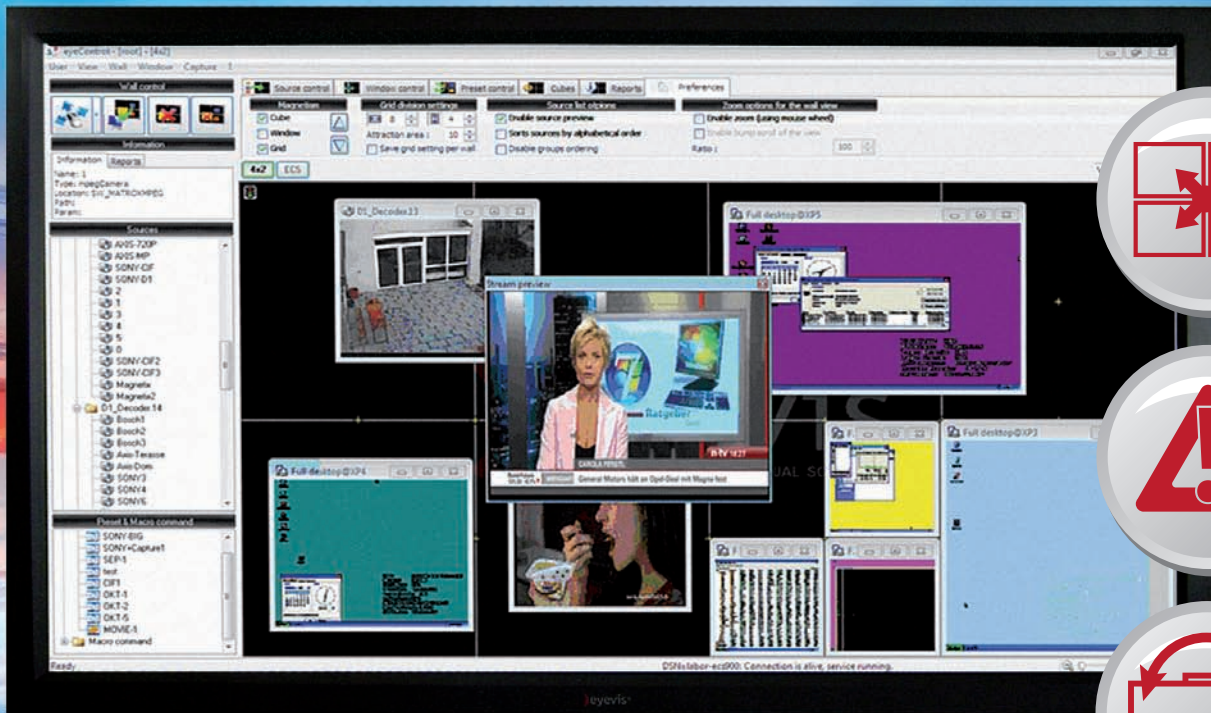


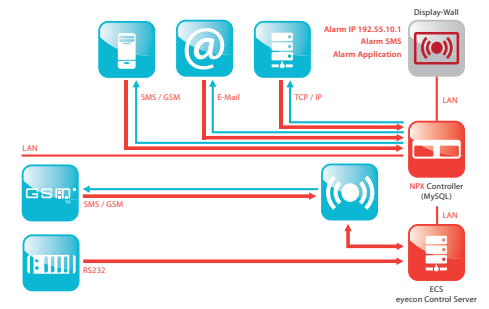
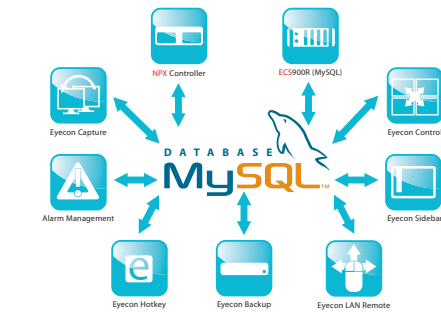
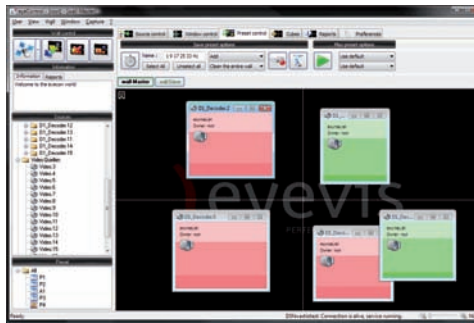
The intelligent Software Solution  
for perfect Control of your Large Screen System



Wall Management Software

# CONTROL ROOM MANAGER

# For perfect Control of your Large Screen System



## eyecon Control Client

- ) Simple integration of clients
- ) All client information are stored on the database
- ) Transmission of display content in the entire network
- ) Drag & Drop surface
- ) Live-Preview of all network sources and physical sources
- ) Preview of all presets and simple definition and launching
- ) Offline mode for simple configuration and definition of layouts
- ) Enables efficient operation of several large screen walls (MutipleWalls)
- ) Time-scheduled control of all presets with the integrated scheduler
- ) Supports large screen displays with different resolutions (MultiResolution)
- ) Allows working with all connected sources and client systems in the network
- ) Comfortable tools like "Snap to Grid", "Snap to Wall" or "Snap to Window" and "Window cloning"
- ) Control over keyboard and mouse from every connected display controller or client eyeSidebar for simple control and integrated software-based KVM solution

## eyecon Server

- ) Central database (mySQL)
- ) Client server architecture
- ) Simple, intuitive central configuration
- ) Full redundancy features with replications (mySQL 5)
- ) Simple backup and disaster recovery (automatic/time-scheduled)
- ) Control mechanism and event reports via email, SMS, TCP/IP
- ) Full API support with TCP/IP, RS232, ODBC connectors, HTML/PHP
- ) Automatic detection of network sources and clients
- ) Unequalled modular design for simple upgrades

## Unique Alarm Management System

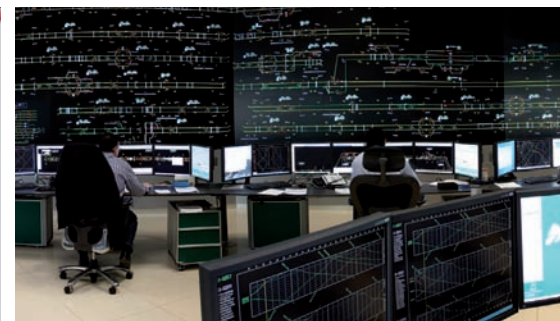
- ) Definition of macros for complex predefined processes
- ) Colour/Motion detection of network sources
- ) Audio-visual display of alarms and events
- ) Transmission of alarm reports to other systems
- ) Simple integration via TCP/IP, ODBC, RS232 and all common network protocols

## eye Teaming

Improved redundancy module for high availability systems with dual netpax connection for resilience purposes. Automatic synchronisation of manipulations on both netpax controllers.

## eye Sidebar

Quick and easy source selection and intrusion without the use of a separate control PC or control monitor directly on the display/video wall.



## ) REFERENCES

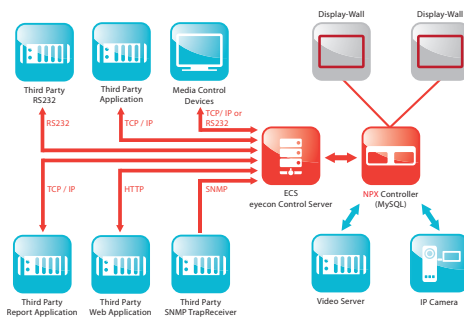
Mit unseren Installationen setzen wir Standards im Bereich der Großbildvisualisierung: Ein Auszug aus unserer Referenzliste.

- ) ABB
- ) Abertis
- ) Abu Dhabi Army
- ) ADIF
- ) Airbus
- ) Alstom
- ) Anas S.p.A.
- ) ARD
- ) Armée Française
- ) BMW
- ) CFE Mexico
- ) Daimler AG
- ) Deutsche Bundeswehr
- ) DHL
- ) E.on
- ) EDF
- ) Emerson Process Management
- ) EnBW
- ) Energoneft
- ) Flughafen München
- ) Französisches Außenministerium
- ) Hennessy
- ) InvenSys
- ) Kepco



### eyecon Display Server

- ) All resources can be started simultaneously and dynamically displayed and administered
- ) Free positioning and scaling of all sources
- ) Cropping and zooming for all capture sources, as well as for video, RGB/DVI and IP streaming
- ) Multiple cropping for individual sources
- ) Manual definition of coordinates and snap-to-grid functions enable the precise positioning of all sources
- ) Control of the wall desktop with the local keyboard and mouse of the operator workstations
- ) Definition of presets with several functions, such as "Replace", "Hide", "Add" and advanced clean commands
- ) Scaling, freezing and cropping of displayed content with MultiCropping technology
- ) Provides control of the large screen wall projectors and status reports for every projector
- ) The eStreamer solution (eyecon capture streamer) transmits RGB or DVI signals over the existing IP network



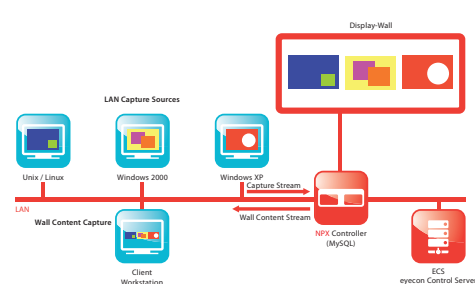
### Integration

- ) The MySQL database of the eyecon system facilitates the communication with any other system
- ) API interface opens the complete control of the eyecon software for any management system
- ) Simple and individual adjustment of the interface for every project
- ) Supports WINDOWS®, UNIX® & LINUX®
- ) Bi-directional display, independent from the operating system
- ) Optional possibility for recording, replaying, fast forwarding and time-shifting from all workstation with recorder function.
- ) Module for installing redundant systems with doubled networks

### Development & Integration eyecon SDK Package

The eyecon SDK Packages includes developer tools and programs to integrate the eyevis system to 3rd parties Systems or Applications. With this package it is possible to realise an easy integration to manage the eyevis product range and get full access and control over all software parts and devices.

For example it is possible to use the comprehensive API to start streams, applications, video window arrangements and achieve full control over the system. Furthermore it provides control of the displays and cubes, for example switching on/off or getting reports if there is a problem. With the eyecon SDK you can easily integrate full wall management functionality into other systems.



### Capture

The eyecon capture function was developed for the visualisation of the desktop contents of all connected work stations on the large screen display. Its intelligent performance enables the joint administration and display of an endless number of clients via LAN, even if they are using different operating systems. With special eStreamer-boxes it is possible to connect additional computers without installing software on them.

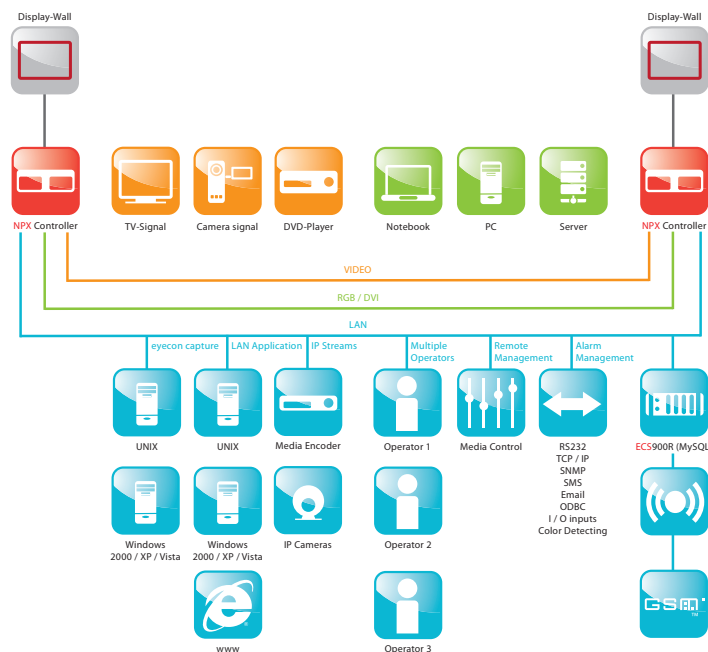
### Client / Capture Hardware Requirements:

- ) Operating System: Windows XP® (x86, x64), 2003 Server® (x86, x64), VISTA® (x86, x64)\*, 2008 Server® (x86, x64), Windows7
- ) Workstation: Minimum Intel® P4 3GHz with 1GB RAM
- ) Network: 100/1000Mbit
- ) Server Hardware Requirements: Operating System: Windows XP®, 2003 Server®, 2008 Server® (32Bit/64Bit) Processor: Intel® XEON® 3GHz CPU



- |               |                                |              |                              |
|---------------|--------------------------------|--------------|------------------------------|
| ) Kubanenergo | ) Petrobras                    | ) SANEF      | ) US Army                    |
| ) Lentransgaz | ) Petróleos de Venezuela S. A. | ) Siemens    | ) Vattenfall                 |
| ) LUKOIL      | ) President Office Mexico      | ) SNCF       | ) Verkehrszentrale Stuttgart |
| ) Mapna       | ) Rabobank                     | ) Telefonica | ) Vodafone                   |
| ) Mosenergo   | ) RATP                         | ) THALES     | ) Volkswagen                 |
| ) NATO        | ) Renfe                        | ) Transco    | ) ZDF                        |
| ) Oman Mobile | ) ROK Army                     | ) Tupras     |                              |
| ) Orange      | ) RWE                          | ) TV2        |                              |

# The intelligent Software Solution



## ) EYECON LITE STANDARD

- ) 3 User licenses (for simultaneous use)
- ) Shortcut Manager & Scheduler
- ) API Support RS232, TCP/IP, ODBC

## ) EYECON BASIC STANDARD

- ) 5 User licenses (for simultaneous use)
- ) Shortcut Manager & Scheduler
- ) API Support RS232, TCP/IP, ODBC
- ) eyecon LAN Remote, Wall Mouse & Keyboard control from Client stations
- ) eyecon Reporter, Error Messages over eMail or TCP/IP, RS232
- ) WebControl HTML/PHP API Support
- ) NoneSquareLayouts with Multiresolution & Pivot function for NPX3x00 Range

## ) EYECON BASIC OPTIONAL

- ) User license unlimited
- ) eyecon Redundancy for 2x NPX Controller incl. Networkboard for Cubes & LCD
- ) eyecon Capture unlimited
- ) eStreamer Support
- ) MultiWalls unlimited
- ) MultiCropping for Video, IP streams, RGB/DVI
- ) eyecon SideBar incl. KVM and Control
- ) Alarm Management
  - ) ColorDetection
  - ) SNMP
  - ) SMS incl. GSM Hardware
  - ) I/O Inputs incl. Hardware
  - ) Macro / Alias Support / Alarm Definition Creator
- ) eyecon Recorder unlimited to record and playback of Capture client content

## ) EYECON PREMIUM STANDARD

- ) Unlimited User license (simultaneous use)
- ) Shortcut Manager & Scheduler
- ) API Support RS232, TCP/IP, ODBC
- ) eyecon LAN Remote, Wall Mouse & Keyboard control from Client stations
- ) eyecon Reporter
- ) Error Messages over eMail or TCP/IP, RS232
- ) WebControl HTML/PHP API Support
- ) NoneSquareLayouts, with Multiresolution & Pivot function for NPX3x00 Range
- ) Alarm Management
  - ) ColorDetection
  - ) SNMP
  - ) SMS incl. GSM Hardware
  - ) I/O Inputs incl. Hardware
  - ) Macro / Alias Support / Alarm Definition Creator
- ) eyecon Capture unlimited
- ) eStreamer Support
- ) MultiWalls unlimited
- ) MultiCropping for Video, IP streams, RGB/DVI
- ) eyecon SideBar incl. KVM and Control

## ) EYECON PREMIUM OPTIONAL

- ) eyecon Recorder unlimited
- ) to record and playback of Capture client content
- ) eyecon Redundancy for 2x NPX Controller incl. Networkboard for Cubes & LCD

As at: 2010 | Subject to change! All trademarks and registered trademarks are the property of their respective owners. Copyright © 2010 eyevis GmbH. All rights reserved.

## ) CONTACT



**eyevis GmbH**  
 Hundschleestraße 23  
 72766 Reutlingen  
 Germany

Tel.: +49 (0) 7121 43303-0  
 Fax: +49 (0) 7121 43303-22  
 Web: www.eyevis.de  
 E-Mail: info@eyevis.de

